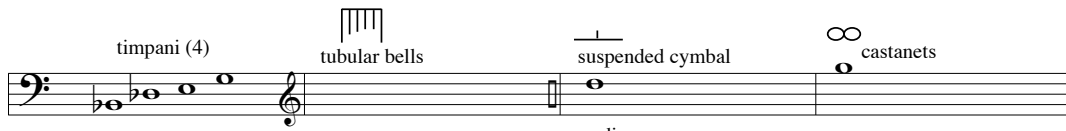
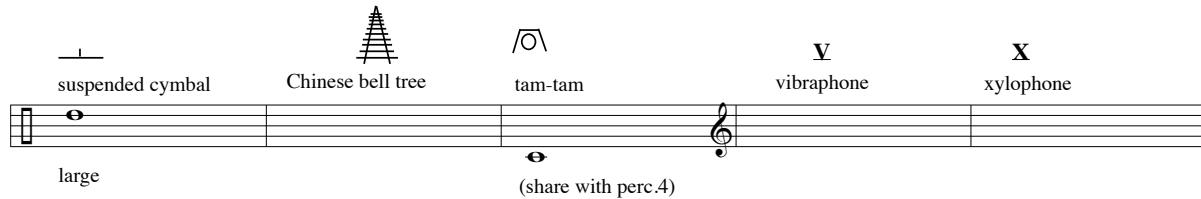


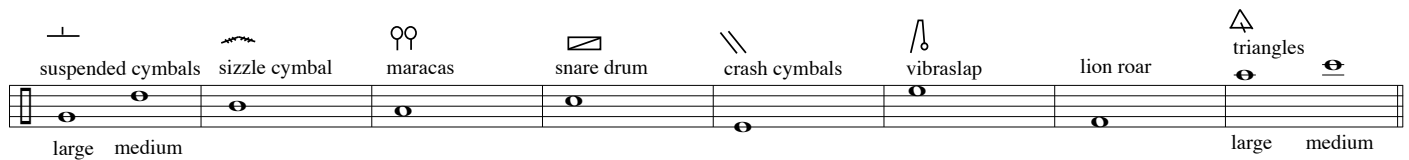
Percussion Distribution



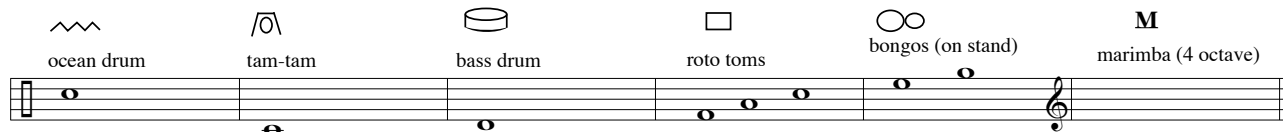
Mallets: soft (2), medium (2), hard (2), rawhide mallets (2), chamois covered mallets (2), wire brushes (2)



Mallets: medium cord (2), hard cord (2), brass (1) for bell tree, plastic (2), medium cord (2)



Mallets: wooden sticks (2), wire brushes (2), hard yarn (2), metal stick for triangles



Mallets: large beater, hard yarn (4), soft yarn (4)

About the Vocal Parts: In this work the percussionists are asked to sing in a few passages. Should the instrumentalists be uncomfortable with this singing role, singers may be added to the ensemble. However, if vocalists are added, they must be positioned (embedded) in the percussion battery in an inconspicuous way and remain on stage in position throughout the entire composition. The sonority of the combined vocal parts is meant to homogenous and atmospheric. Therefore, care must be taken to insure that the parts are blended in a way that no one singer becomes more prominent than any other.

About the Composition

Relective Journey for horn and percussion quartet by Howard J. Buss was written in the winter of 2013-14 and is dedicated to hornist Andrew Pelletier and percussionist Roger Schupp. The musical thrust of this colorful work is analogous to a spiritual voyage one may experience while dealing with a major crisis. The sections of the composition exude much contrast and transverse a wide range of moods - from the hauntingly pensive, to tender lyricism, to jubilation.

Relective Journey is the latest in a series of works for a solo instrument and percussion quartet by the composer. The first in this long-term project, *Coexistence* for clarinet and percussion quartet, dates back to 1979. Other works in the series include *Dream Sequence* (trombone), *Escapade* (alto sax), *Mysterious Exit* and *Modern Times* (flute), *Spanish Memoirs* (trumpet), and *American Phoenix* (tuba or bass trombone). All are published by Brixton Publications www.brixtonpublications.com/

About the Composer

Howard J. Buss (b. 1951) is recognized internationally as a significant composer of contemporary classical music. His compositions have received critical acclaim, have been performed in more than 50 countries, and are frequently featured at national and international music conventions and festivals. They have been performed by faculty musicians from major universities as well as current and former members of organizations such as The Boston Symphony Orchestra, Minnesota Orchestra, Buffalo Philharmonic, Israel Philharmonic, Berlin Philharmonic, Vancouver Symphony, Atlanta Symphony, New York Philharmonic, Chicago Symphony, etc. A copy of his patriotic composition *Fanfares* is included in the Presidential Collection of Ronald Reagan. Buss' more than 150 published works include instrumental solos, chamber music, symphonic, choral, and band works.

Buss has received numerous awards and his commissioned works include original compositions as well as arrangements. His works are frequently selected to be included and analyzed in doctoral dissertations, lectures, professional music journals, and music literature bibliographies. They have been recorded on the Albany, Bottega Discantica (Italy), Crystal, Capstone, DUX (Poland), Equilibrium, HoneyRock, IBS Classical (Spain), PL Productions, and C.Alan Publications labels.

Howard J. Buss received his B.A. in Applied Music from West Chester University, M.M. in Performance and M.M. in Composition from Michigan State University, and D.M.A. in Composition from the University of Illinois. He is the founder and editor of Brixton Publications (ASCAP) and Buss Publications (BMI), which publish contemporary American concert music.